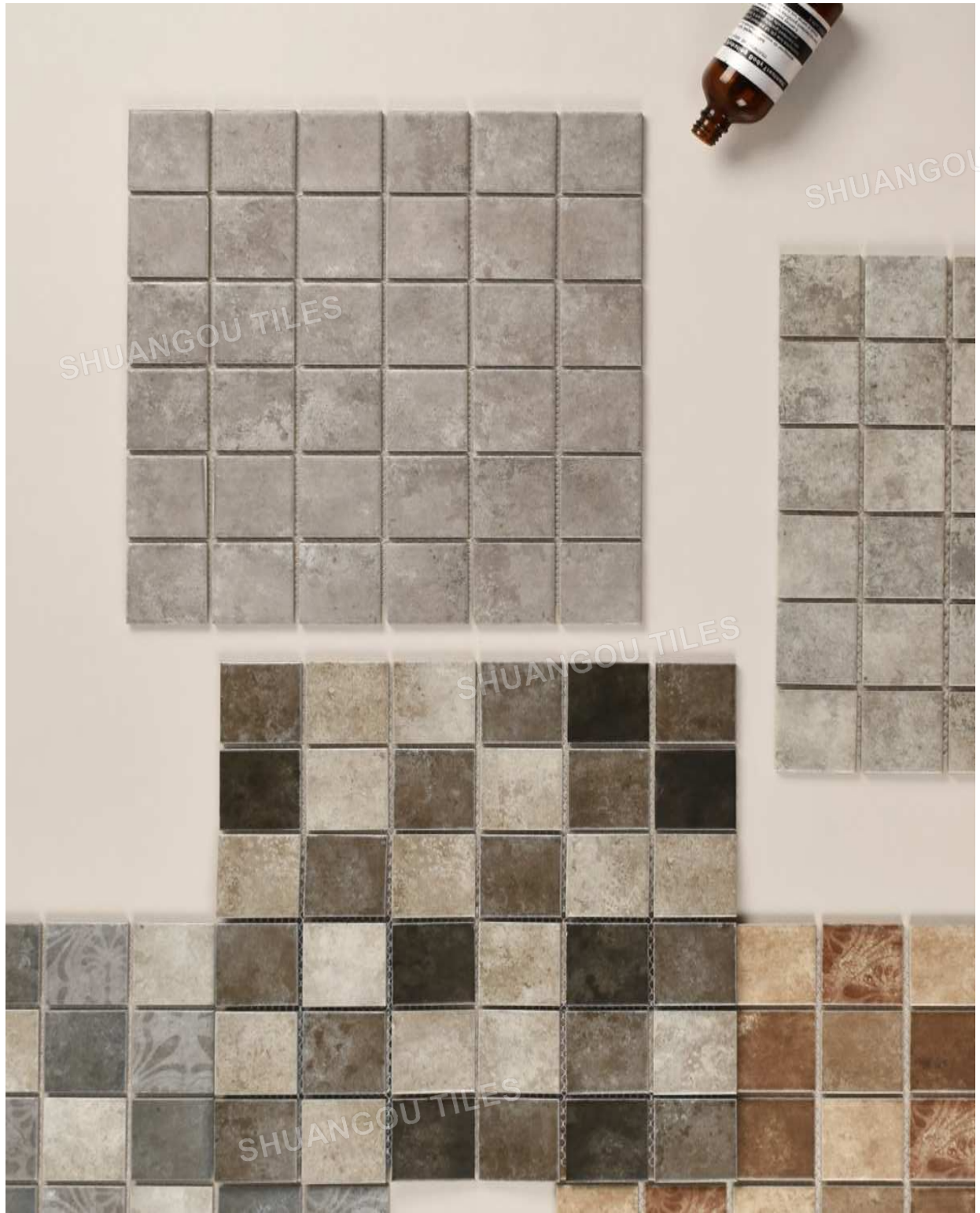


SHUANGOU TILES



SHUANGOU TILES

SHUANGOU TILES

SHUANGOU TILES

SHUANGOU TILES

SHUANGOU TILES

SHUANGOU TILES

CEMENT GRAY

SHUANGOU TILES



SHUANGOU TILES

SHUANGOU TILES

SHUANGOU TILES

SHUANG

SHUANGOU TILES

SHUANGOU TILES

IK48C03

Chip Size (mm) :48x48

Sheet Size(mm) :306x306



Cement gray porcelain mosaic tile
セメント灰色の磁器モザイクタイル

exterior wall	interior wall	exterior floor	interior floor	bathroom floor
○	○	×	○	○

12011

Sheet Size(mm) :1200×600

IK48C03

Chip Size (mm) :48×48

Sheet Size(mm) :306×306



IK48C03

Chip Size (mm) :48×48

Sheet Size(mm) :306×306

Support mixed paste and independent design services, welcome to inquire.
 混合ペーストと独立したデザインサービスをサポートし、お問い合わせを歓迎します



IK041
 Chip Size (mm) :48x48
 Sheet Size(mm) :306x306

星享俱乐部升级了
你好 有星人
 入会积星 尊享权益



IK041
 Chip Size (mm) :48x48
 Sheet Size(mm) :306x306



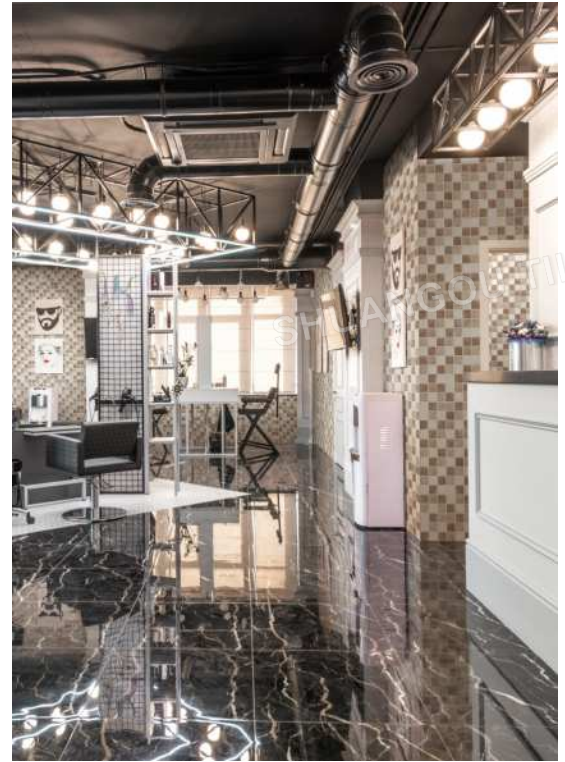
RM4954
 Chip Size (mm) :45x145
 Sheet Size(mm) :284x365





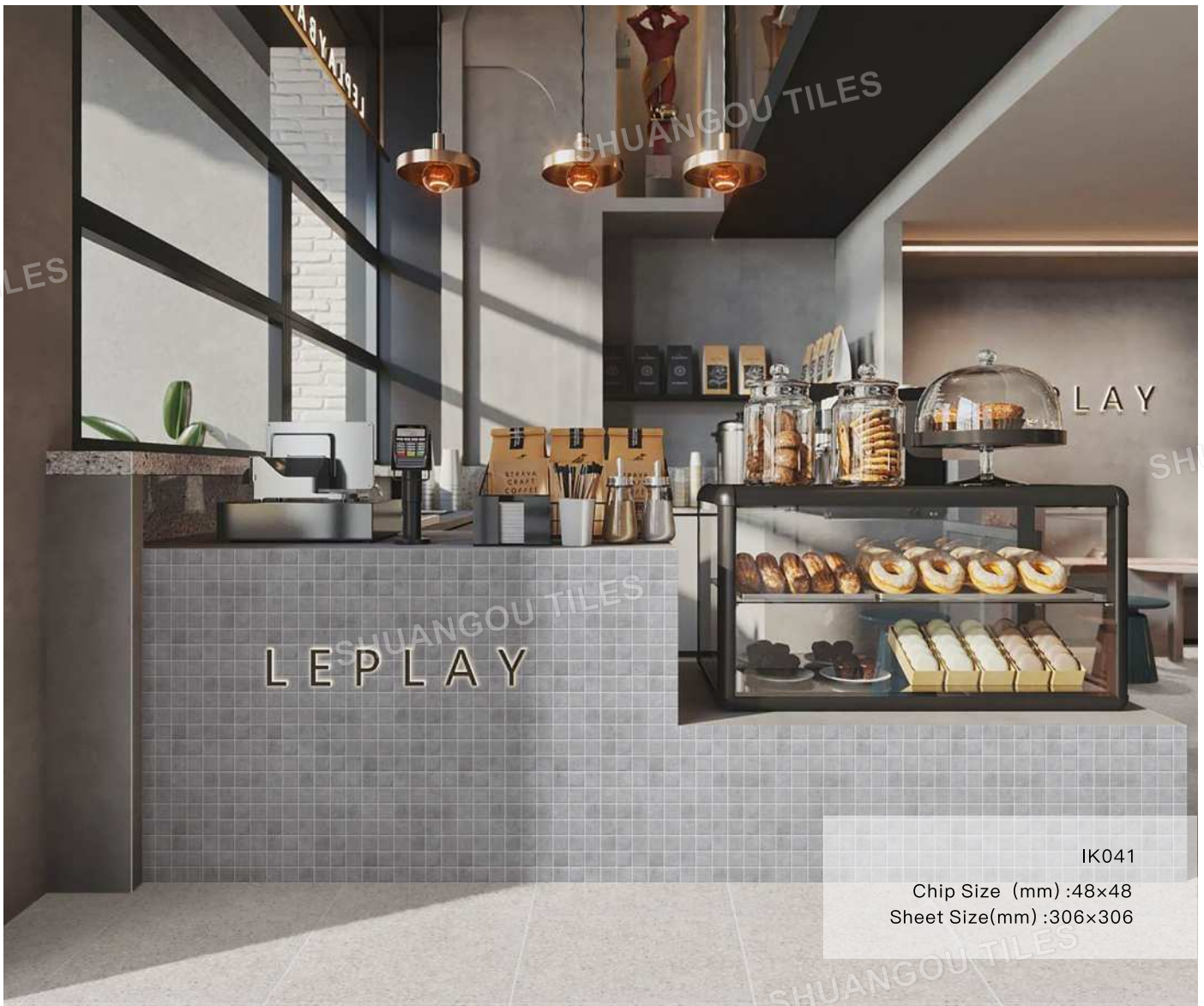
Do not use acidic or alkaline cleaners for maintenance
メンテナンスに酸性またはアルカリ性のクリーナーを使用しないでください

exterior wall	interior wall	exterior floor	interior floor	bathroom floor
○	○	×	○	○



IK48C05

Chip Size (mm) :48×48
Sheet Size(mm) :306×306



IK041

Chip Size (mm) :48×48
Sheet Size(mm) :306×306

Cement Gray Porcelain Mosaic Tile

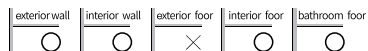
セメント灰色の磁器モザイクタイル



Attention about the product ● This product is a ceramic product, once it breaks, there is a danger of injury to the body. So please pay full attention when handling. ● During maintenance, please do not use strong acid or strong alkaline detergents.
製品についての注意 ● 本製品はセラミック製品ですので、一度破損すると人体に危害を及ぼす恐れがあります。取り扱いには十分ご注意ください。●メンテナンス中は、強酸または強アルカリ性洗剤を使用しないでください。

Attention on tiling ● If the product needs to be cut during the paving process, please use a tile cutter or glass cutter for the cut surface, and polish the cut surface with a grindstone to avoid injury. ● Please do not use a sander to cut, because it may cause accidents or product damage, and is very dangerous.
工事上の注意について ● 舗装中に切断が必要な場合は、切断面にタイルカッターまたはガラスカッターを使用し、けがをしないように砥石で切断面を研磨してください。● 事故や製品の破損の原因となり、非常に危険ですので、サンダーを使用して切断しないでください。

Regarding customized products ● We will do the paving after ordering, so please check the delivery date.
カスタマイズモデルについて ● ご注文後に舗装を行いますので、納期をご確認ください。



48 Cement Gray Porcelain Mosaic Tile



ITEM:IK032
SHEET SIZE:306x306mm
SURFACE:MATT



ITEM:IK040
SHEET SIZE:306x306mm
SURFACE:MATT



ITEM:IK041
SHEET SIZE:306x306mm
SURFACE:MATT



ITEM:IK48C05
SHEET SIZE:306x306mm
SURFACE:MATT



ITEM:IK48C02
SHEET SIZE:306x306mm
SURFACE:MATT

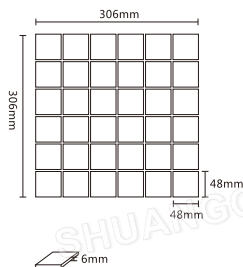


ITEM:IK48C01
SHEET SIZE:306x306mm
SURFACE:MATT



ITEM:IK48C03
SHEET SIZE:306x306mm
SURFACE:MATT

48 Cement Gray Porcelain Mosaic Tile



PRODUCE	48 Cement Gray Porcelain Mosaic Tile
SHEET SIZE(mm)	306x306
WEIGHT (kg)/BOX	23
SHEET/BOX	22
SQUARE/BOX	2.06
CHIP SIZE(mm)	6

● The size is shown as a standard size. Please note that there are dimensional errors depending on the batch, so please pay attention when distributing and cutting the tiles.
 (サイズは標準サイズで表示しておりますが、バッチによっては寸法誤差がありますので、タイルの配布やカットにはご注意ください。)

Cement Gray Porcelain Mosaic Tile

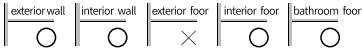
セメント灰色の磁器モザイクタイル



Attention about the product ● This product is a ceramic product, once it breaks, there is a danger of injury to the body. So please pay full attention when handling. ● During maintenance, please do not use strong acid or strong alkaline detergents.
製品についての注意 ● 本製品はセラミック製品ですので、一度破損すると人体に危害を及ぼす恐れがあります。取り扱いには十分ご注意ください。●メンテナンス中は、強酸または強アルカリ性洗剤を使用しないでください。

Attention on tiling ● If the product needs to be cut during the paving process, please use a tile cutter or glass cutter for the cut surface, and polish the cut surface with a grindstone to avoid injury. ● Please do not use a sander to cut, because it may cause accidents or product damage, and is very dangerous.
工事上の注意について ● 舗装中に切断が必要な場合は、切断面にタイルカッターまたはガラスカッターを使用し、けがをしないように砥石で切断面を研磨してください。● サンドーを使用して切断しないでください。

It is recommended to use white or light-colored adhesives ● Please note that please use adhesive on a flat surface to complete and paste. Also, be careful not to leave air on the back of the tiles.
白または明るい色の接着剤を使用することをお勧めします ● 完成させて貼り付けるには、平らな面に接着剤を使用してください。また、タイルの裏側に空気を残さないように注意してください。



300x600 Cement Gray Porcelain Mosaic Tile



ITEM: 3648
SHEET SIZE: 300x600mm
SURFACE: MATT



ITEM: 3649
SHEET SIZE: 300x600mm
SURFACE: MATT



ITEM: 3826
SHEET SIZE: 300x600mm
SURFACE: MATT



ITEM: 3827
SHEET SIZE: 300x600mm
SURFACE: MATT



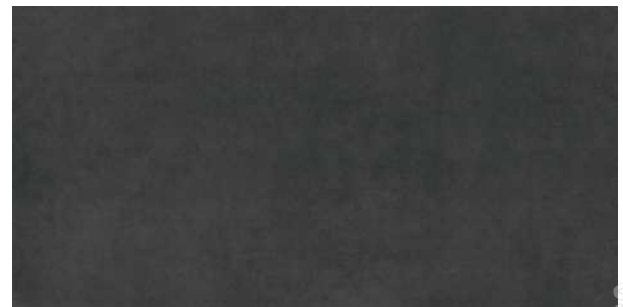
ITEM: 3828
SHEET SIZE: 300x600mm
SURFACE: MATT

600x1200 Cement Gray Porcelain Mosaic Tile



ITEM: 12005
SHEET SIZE: 600x1200mm
SURFACE: MATT

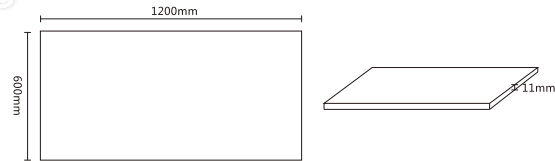
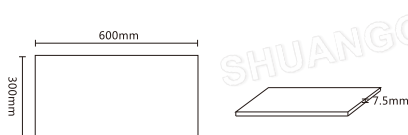
600x1200 Cement Gray Porcelain Mosaic Tile



ITEM: 12006
SHEET SIZE: 600x1200mm
SURFACE: MATT

300x600 Cement Gray Porcelain Mosaic Tile

600x1200 Cement Gray Porcelain Mosaic Tile






PRODUCE	300x600 Cement Gray Porcelain Mosaic Tile	600x1200 Cement Gray Porcelain Mosaic Tile
SHEET SIZE(mm)	300x600	600x1200
WEIGHT (kg)/BOX	27	36
SHEET/BOX	10	2
SQUARE/BOX	1.8	1.44
CHIP SIZE(mm)	7.5	11

● The size is shown as a standard size. Please note that there are dimensional errors depending on the batch, so please pay attention when distributing and cutting the tiles.
 (サイズは標準サイズで表示しておりますが、バッチによっては寸法誤差がありますので、タイルの配布やカットにはご注意ください。)

Technical Info

技術的な情報

	性能 Properties	检测方法 Test Method	要求 Requirements	检验结果 Results	判定 Verdicts
	长度和宽度 Length and Width 每块砖的平均尺寸相对于工作尺寸的允许偏差 The deviation of the average size for each tile (4 sides) from the work size	18010545-2:2018	N<7cm	-0.39%~+0.19%	N/A
				-0.2mm~+0.1 mm	N/A
	厚度 Thickness 每块砖厚度的平均值相对于工作尺寸的最大允许偏差 The deviation of the average thickness of each tile from the work size thickness	18010545-2:2018	N<7cm	-1.1%~+0.4%	N/A
				-0.1mm~0	N/A
	吸水率 Water absorption 质量分数 Percent mass fraction	ISO 10545-3:2018	Ev≤0.5%	0.15%	P
			单个值不大于0.6% Individual maximum 0.6%	0.05% 0.1 2%	P
	断裂模数(N/mm ²) Modulus of rupture, in N/mm ² 不适用于破坏强度≥3000N的陶瓷砖 Not applicable to tiles with breaking strength≥3000N	ISO 10545-4:2019	平均值≥35 Minimum 35	50.1-67.5	P
			单个值≥32 Individual maximum 32	50.1	P
	耐磨性 Abrasion resistance 用于地面的有釉砖的表面耐磨性 Resistance to surface abrasion of glazed tiles intended for use on floors	ISO 10545-7:1996	报告耐磨级别 Report abrasion class	2级 Class 2	-
			报告耐磨转数 Report cycles passed	600	-
	表面质量 Surface quality	18010545-2:2018	至少有95%的砖其主要区域无明显缺陷 A minimum 95% of the tiles shall be free from visible defec inspected vertically at 1.0m.	100%	P
	线性热膨胀系数: 室温 100C Coefficient of linear thermal expansion: from ambient temperature to 100°C	ISO 10545-8:2014	报告检验结果 Test method available	-	N/A
	抗热震性 Thermal shock resistance	ISO 10545-9:2013	报告检验结果 Test method available	样品经试验, 无炸裂或剥落 TFully resistance	-
	抗釉裂性: 有釉砖 Crazing resistance: glazed tiles	ISO 10545-11:1994	应通过此项测试 Required	样品经试验, 无裂纹或剥落 TFully resistance	P
	抗冻性 Frost resistance	ISO 10545-12:1995/ Cor1:1997	应通过此项测试 Required	所有样品, 无裂纹或破损 TFully resistance	P
	莫氏硬度 Scratch hardness of surface according to Mohs	EN 15771:2010	报告检验结果 Test method available	6	-
	破坏强度/N Breaking strength, in N	ISO 10545-4:2019	≥700	943	P

Guideline for Mosaic Tile Paving

1.SKIMMING

This is a step that serves to render the substrate selected for tiling perfectly smooth, uniform and white (a substrate showing differences in color will spoil the appearance of the finished mosaic).

2.STARTING LINES

Draw lines on the surface of the substrate to aid correct positioning of the sheets. Lay three sheets out the floor side by side, so that the gap between the sheets is the same as the gap between the single tessera, and measure the overall width. Transfer this measurement both horizontally and vertically to the surface being covered and using a straightedge and a spirit level, mark out a grid, the area will now be divided into a number of squares, each corresponding to nine sheets of mosaic.

3.PREPARING THE ADHESIVE

Prepare the adhesive, and spread over an area no larger than will be occupied by the first nine sheets, using the trowel. First apply a thick coat with the smooth edge of the tool, drawing the teeth across evenly and “combing” the adhesive to produce a uniformly ridged bed. The sheets can now be positioned.

4.LAYING AND FIXING

The sheets are back-mounted to a mesh that should be directly applied to the bed of adhesive. On walls, the thicker strands of mesh should be positioned vertically. Please note: the gap separating adjacent sheets must be the same as the gap between single tessera.

5.A FIRM BOND

With the sheets in place, tap the tessera home with a float so that the mesh beds firmly into the adhesive.

6.A PERFECT END RESULT

With all the sheets laid or fixed, and before the adhesive begins to set, the distance between tessera can be adjusted to ensure that all gaps are of uniform width. This is done by cutting through the mesh along the gap with a knife and edging the adjoining tessera marginally closer together or farther apart with the aid of a trowel. This is a step of the mosaic tiling procedure that calls for patience, but one that also adds considerable value to the finished job.

7.GROUTING

Make sure to use all of the grout. Using the small trowel, scoop the grout, a little at a time, onto the float and begin applying to the mosaic. Move the tool diagonally across the tessera, first from the bottom up and then squeegee downwards in the opposite direction, making certain that all of the joints are completely filled and that no excess remains.

8.CLEANING

Before the grout hardens, begin cleaning off the surface. prepare two buckets of this solution: immerse the pad in the first, and without winging, swab the surface of the mosaic repeatedly with a circular motion. Next, immerse the sponge in the second bucket and wipe down the surface, removing all residual traces of grout. Finally, wipe down with the sponge, this time using clean water to remove any smears, leaving the mosaic sparklingly clean.



Foshan city ShuangOu ceramics co., Ltd

Address: Nanzhuang street, 525100 Foshan, Guangdong, China

Domestic sales department telephone: 0757-85394100

Overseas Sales Department Phone: 0757-85393500

Email: info5@shuangoutiles.com

Quality report email: admin@shuangoutiles.com

Official website: <https://www.shuangoutiles.com>

WhatsApp: +86 137 0308 9834

Facebook: Foshan city ShuangOu ceramics co., Ltd