

# THE ANTIQUE

---

---

SHUANGOU TILES



Free design services take the guesswork out of tile design by consulting one of our skilled tile experts. They'll answer any questions you may have so you can feel confident in starting your next project. Schedule a free design consultation online.

The Five'sのタイルを選ぶとき、おめでとうございます。デザインについて心配する必要はありません。経験豊富なモザイクデザイナーにいつでもどこでも連絡できます。彼らはあなたの質問に辛抱強く答え、参考のために無料のレンダリングを送信します。



M48H789

Chip Size (mm) : 48×48  
Sheet Size (mm) : 306×306



SHUANGOU TILES

M48H123

Chip Size (mm) :48×48  
Sheet Size(mm) :306×306



F48H1256  
Chip Size (mm) :48×48  
Sheet Size(mm) :306×306



M48H789  
Chip Size (mm) :48×48  
Sheet Size(mm) :306×306

## What's Old Is New Again

With collections that cater to every style, one-of-a-kind tile designs featuring unique patterns and custom layouts are limited only by your own creativity.



M48H236

Chip Size (mm) :48×48

Sheet Size(mm) :306×306



Antique feeling porcelain mosaic tile  
アンティーク感のある磁器モザイクタイル

exterior wall	interior wall	exterior floor	interior floor	bathroom floor
○	○	×	○	○

M48H123

Chip Size (mm) :48×48

Sheet Size(mm) :306×306



SHUANGOU TILES

SHUANGOU TILES

SHUANGOU TILES

SHUANGOU TILES

SHUANG

SHUANGOU TILES

SHUANGOU TILES

M48H236

Chip Size (mm) :48x48  
Sheet Size(mm) :306x306

# Cement Gray Porcelain Mosaic Tile

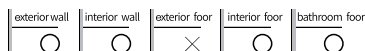
## セメント灰色の磁器モザイクタイル



For products with high anti-slip properties ●because the texture of the surface of the object can easily jam the fibers of the cleaning product, please do not use cleaning tools such as mops.  
 滑り止め性能の高い製品の場合 ●対象物の表面の質感が洗浄剤の繊維を詰まらせやすいため、モップなどの洗浄剤は使用しないでください。

About application of the products ●Please leave a gap width of 3mm for tiling. ●After removing the glue on the surface of the tile, wipe clean the remaining glue on the joints of the tile. ●For detailed construction guidelines, please refer to "Tile Construction Guidelines"  
 製品に関する注意事項 ●工事には3mmの隙間幅をご利用ください。●タイルの表面の接着剤を取り除いた後、タイルの表面に残っている接合部を拭いてきれいにするために接合部の建設に進みます。●詳細な施工ガイドラインについては、「タイル施工ガイドライン」を参照してください。

It is recommended to use white or light-colored adhesives ●Please note that please use adhesive on a flat surface to complete and paste. Also, be careful not to leave air on the back of the tiles.  
 白または明るい色の接着剤を使用することをお勧めします ●完成させて貼り付けるには、平らな面に接着剤を使用してください。また、タイルの裏側に空気を残さないように注意してください。



### Cement Gray Porcelain Mosaic Tile

#### セメント灰色の磁器モザイクタイル



ITEM:4850  
SHEET SIZE:306x306mm  
SURFACE:MATT



ITEM:4853  
SHEET SIZE:306x306mm  
SURFACE:MATT



ITEM:4858  
SHEET SIZE:306x306mm  
SURFACE:MATT



ITEM:F48H026  
SHEET SIZE:306x306mm  
SURFACE:MATT



ITEM:F48H789  
SHEET SIZE:306x306mm  
SURFACE:MATT



ITEM:F48H1256  
SHEET SIZE:306x306mm  
SURFACE:MATT



ITEM:M48H123  
SHEET SIZE:306x306mm  
SURFACE:MATT

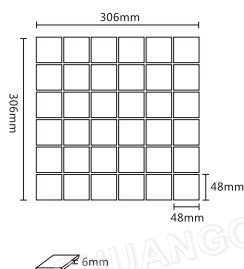


ITEM:M48H236  
SHEET SIZE:306x306mm  
SURFACE:MATT



ITEM:M48H789  
SHEET SIZE:306x306mm  
SURFACE:MATT

### Cement Gray Porcelain Mosaic Tile



PRODUCE	Cement Gray Porcelain Mosaic Tile
SHEET SIZE(mm)	306x306
WEIGHT (kg)/BOX	23
SHEET/BOX	22
SQUARE/BOX	2.06
CHIP SIZE(mm)	6

● The size is shown as a standard size. Please note that there are dimensional errors depending on the batch, so please pay attention when distributing and cutting the tiles.  
 (サイズは標準サイズで表示しておりますが、バッチによっては寸法誤差がありますので、タイルの配布やカットにはご注意ください。)

# Antique Feeling Porcelain Mosaic Tile

## アンティーク感のある磁器モザイクタイル



**Attention about the product** ● This product is a ceramic product, once it breaks, there is a danger of injury to the body. So please pay full attention when handling. ● During maintenance, please do not use strong acid or strong alkaline detergents. ● 製品についての注意 ● 本製品はセラミック製品ですので、一度破損すると人体に危害を及ぼす恐れがあります。取り扱いには十分ご注意ください。● メンテナンス中は、強酸または強アルカリ性洗剤を使用しないでください。

**Attention about the product** ● Please leave a gap width of 3mm for tiling. ● After removing the glue on the surface of the tile, wipe clean the remaining glue on the joints of the tile. ● For detailed construction guidelines, please refer to "Tile Construction Guidelines" ● 工事には3mmの隙間幅をご利用ください。● タイルの表面の接着剤を取り除いた後、タイルの表面に残っている接合部を拭いてきれいにするために接合部の建設に進みます。● 詳細な施工ガイドラインについては、「タイル施工ガイドライン」を参照してください。

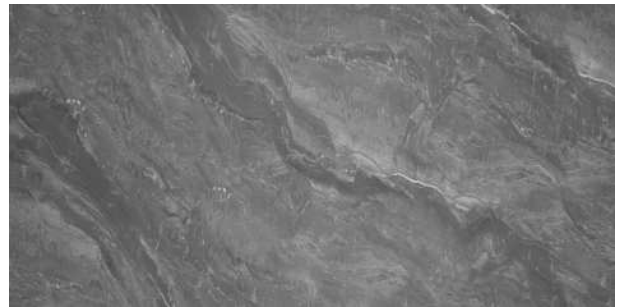
**Precautions for the product** ● Products with high anti-slip properties are prone to stains due to the physical properties of the surface, especially in white and black colors. ● カスタマイズ商品はご注文後にお買い物させていただきますので、お届け日をご確認ください。固定写真以外の混合パターンにも対応しており、混合色の数や比率によって価格が異なりますのでご注意ください。



### 600x1200 Antique Feeling Porcelain Mosaic Tile 600x1200アンティーク感のある磁器モザイクタイル



ITEM:12009  
SHEET SIZE:600x1200mm  
SURFACE:SOFT LIGHT



ITEM:12011  
SHEET SIZE:600x1200mm  
SURFACE:SOFT LIGHT

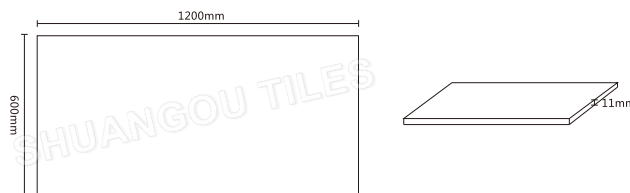


ITEM:12016  
SHEET SIZE:600x1200mm  
SURFACE:SOFT LIGHT



ITEM:12018  
SHEET SIZE:600x1200mm  
SURFACE:SOFT LIGHT

### 600x1200 Antique Feeling Porcelain Mosaic Tile



PRODUCE	600x1200 Antique Feeling Porcelain Mosaic Tile
SHEET SIZE(mm)	600x1200
WEIGHT (kg)/BOX	36
SHEET/BOX	2
SQUARE/BOX	1.44
CHIP SIZE(mm)	11

● The size is shown as a standard size. Please note that there are dimensional errors depending on the batch, so please pay attention when distributing and cutting the tiles.  
(サイズは標準サイズで表示しておりますが、バッチによっては寸法誤差がありますので、タイルの配布やカットにはご注意ください。)

# Technical Info

## 技術的な情報

	性能 Properties	检测方法 Test Method	要求 Requirements	检验结果 Results	判定 Verdicts
	长度和宽度 Length and Width 每块砖的平均尺寸相对于工作尺寸的允许偏差 The deviation of the average size for each tile (4 sides) from the work size	18010545-2:2018	N<7cm	-0.39%~+0.19%	N/A
				-0.2mm~+0.1 mm	N/A
	厚度 Thickness 每块砖厚度的平均值相对于工作尺寸的最大允许偏差 The deviation of the average thickness of each tile from the work size thickness	18010545-2:2018	N<7cm	-1.1%~+0.4%	N/A
				-0.1mm=0	N/A
	吸水率 Water absorption 质量分数 Percent mass fraction	ISO 10545-3:2018	Ev≤0.5%	0.15%	P
			单个值不大于0.6% Individual maximum 0.6%	0.05% 0.1 2%	P
	断裂模数(N/mm <sup>2</sup> ) Modulus of rupture, in N/mm <sup>2</sup> 不适用于破坏强度≥3000N的陶瓷砖 Not applicable to tiles with breaking strength≥3000N	ISO 10545-4:2019	平均值≥35 Minimum 35	50.1-67.5	P
			单个值≥32 Individual maximum 32	50.1	P
	耐磨性 Abrasion resistance 用于地面的有釉砖的表面耐磨性 Resistance to surface abrasion of glazed tiles intended for use on floors	ISO 10545-7:1996	报告耐磨级别 Report abrasion class	2级 Class 2	-
			报告耐磨转数 Report cycles passed	600	-
	表面质量 Surface quality	18010545-2:2018	至少有95%的砖其主要区域无明显缺陷 A minimum 95% of the tiles shall be free from visible defec inspected vertically at 1.0m.	100%	P
	线性热膨胀系数: 室温 100C Coefficient of linear thermal expansion: from ambient temperature to 100°C	ISO 10545-8:2014	报告检验结果 Test method available	-	N/A
	抗热震性 Thermal shock resistance	ISO 10545-9:2013	报告检验结果 Test method available	样品经试验, 无炸裂或剥落 TFully resistance	-
	抗釉裂性: 有釉砖 Crazing resistance: glazed tiles	ISO 10545-11:1994	应通过此项测试 Required	样品经试验, 无裂纹或剥落 TFully resistance	P
	抗冻性 Frost resistance	ISO 10545-12:1995/ Cor1:1997	应通过此项测试 Required	所有样品, 无裂纹或破损 TFully resistance	P
	莫氏硬度 Scratch hardness of surface according to Mohs	EN 15771:2010	报告检验结果 Test method available	6	-
	破坏强度/N Breaking strength, in N	ISO 10545-4:2019	≥700	943	P



## Guideline for Mosaic Tile Paving

### 1.SKIMMING

This is a step that serves to render the substrate selected for tiling perfectly smooth, uniform and white (a substrate showing differences in color will spoil the appearance of the finished mosaic).

### 2.STARTING LINES

Draw lines on the surface of the substrate to aid correct positioning of the sheets. Lay three sheets out the floor side by side, so that the gap between the sheets is the same as the gap between the single tessera, and measure the overall width. Transfer this measurement both horizontally and vertically to the surface being covered and using a straightedge and a spirit level, mark out a grid, the area will now be divided into a number of squares, each corresponding to nine sheets of mosaic.

### 3.PREPARING THE ADHESIVE

Prepare the adhesive, and spread over an area no larger than will be occupied by the first nine sheets, using the trowel. First apply a thick coat with the smooth edge of the tool, drawing the teeth across evenly and “combing” the adhesive to produce a uniformly ridged bed. The sheets can now be positioned.

### 4.LAYING AND FIXING

The sheets are back-mounted to a mesh that should be directly applied to the bed of adhesive. On walls, the thicker strands of mesh should be positioned vertically. Please note: the gap separating adjacent sheets must be the same as the gap between single tessera.

### 5.A FIRM BOND

With the sheets in place, tap the tessera home with a float so that the mesh beds firmly into the adhesive.

### 6.A PERFECT END RESULT

With all the sheets laid or fixed, and before the adhesive begins to set, the distance between tessera can be adjusted to ensure that all gaps are of uniform width. This is done by cutting through the mesh along the gap with a knife and edging the adjoining tessera marginally closer together or farther apart with the aid of a trowel. This is a step of the mosaic tiling procedure that calls for patience, but one that also adds considerable value to the finished job.

### 7.GROUTING

Make sure to use all of the grout. Using the small trowel, scoop the grout, a little at a time, onto the float and begin applying to the mosaic. Move the tool diagonally across the tessera, first from the bottom up and then squeegee downwards in the opposite direction, making certain that all of the joints are completely filled and that no excess remains.

### 8.CLEANING

Before the grout hardens, begin cleaning off the surface. prepare two buckets of this solution: immerse the pad in the first, and without winging, swab the surface of the mosaic repeatedly with a circular motion. Next, immerse the sponge in the second bucket and wipe down the surface, removing all residual traces of grout. Finally, wipe down with the sponge, this time using clean water to remove any smears, leaving the mosaic sparklingly clean.



## **Foshan city ShuangOu ceramics co., Ltd**

Address: Nanzhuang street, 525100 Foshan, Guangdong, China

Domestic sales department telephone: 0757-85394100

Overseas Sales Department Phone: 0757-85393500

Email: info5@shuangoutiles.com

Quality report email: admin@shuangoutiles.com

Official website: <https://www.shuangoutiles.com>

WhatsApp: +86 137 0308 9834

Facebook: Foshan city ShuangOu ceramics co., Ltd